



Model: TM120-125	Oct. 12, 2017
Serial #: All	
Product Bulletin # TM-027	

TM120-125 Barrier

A barrier kit designed to rope off the area around the TM120-125 is now available for purchase. The kit consists of hose and fasteners, which, once installed, serve as a visual barrier to warn personnel not to enter the area between the main boom and jib boom. The kit will be a standard feature for NABORS on any TM120-125 Version 1.3 builds.

Serial Numbers Affected

120001 through 120071.

Installation Kit

Canrig kit P/N AY52135 contains the necessary hoses, hardware, and tooling to perform the installation. Contact RIGLINE 24/7™ Support for price and availability. Each kit consists of the following components:

AY52135 - KIT, ARM BARRIER, TM120-125

Item	P/N	Description	Qty
1	DT50343	BARRIER, 3/4IN SAFETY STRAP, SHORT TM80ST	2
2	DT50344	BARRIER, SAFETY STRAP, LONG TM80 ST	2
3	FEN-0312-0125	WASHER, FENDER, 5/16 X 1 ¼ O.D.	5
4	HH-0312NC-0200-GR8	CAPSCR, HEX HD, 5/16-18UNC x 2.00, GR8	2
5	HH-0312NC-0125-GR8	CAPSCR, HEX HD, 5/16-18UNC x 1.25, GR8	3
6	LN-0312NC-NL-GR8	LOCKNUT, 5/16-18UNC, NYLOCK, GR8	5
7	HH-0625NC-00075-GR8	CAPSCR, HEX HD, 5/8-11UNC x .75, GR8	1
8	FW-0625-A-W	WASHER, F, 5/8, TYPE A, WIDE	1
9	M11537	DRILL BIT 21/64 IN	1

Installation Instructions



Warning!

Perform lock out and tag out of electrical equipment in accordance with local procedure prior to beginning installation.

Drilling Required Holes

1. Using the 21/64" drill bit supplied with the kit, drill holes in the main boom, jib boom, and tong valve mounting bracket as indicated in Figure 3 on page 4 and Figure 4 on page 5.

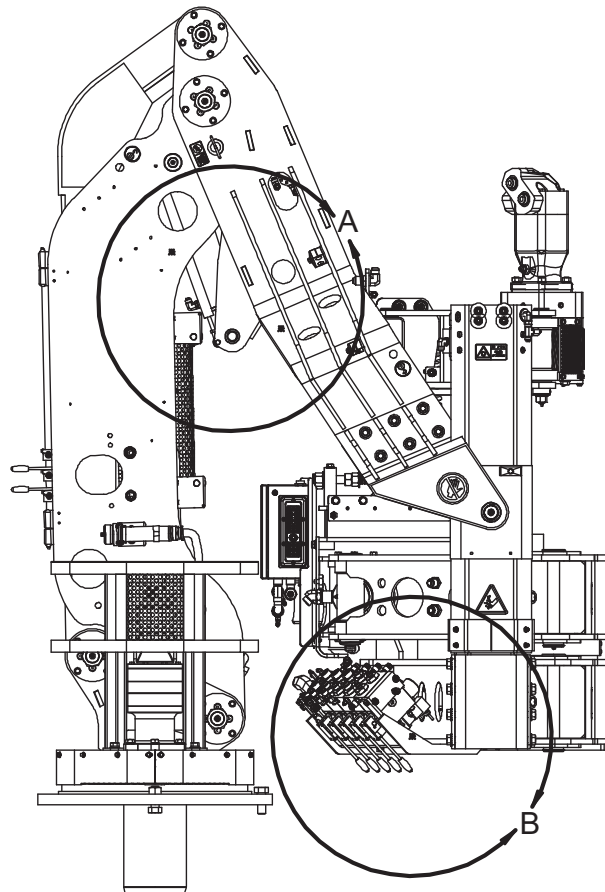


Figure 1: TM120-125 Right Side View

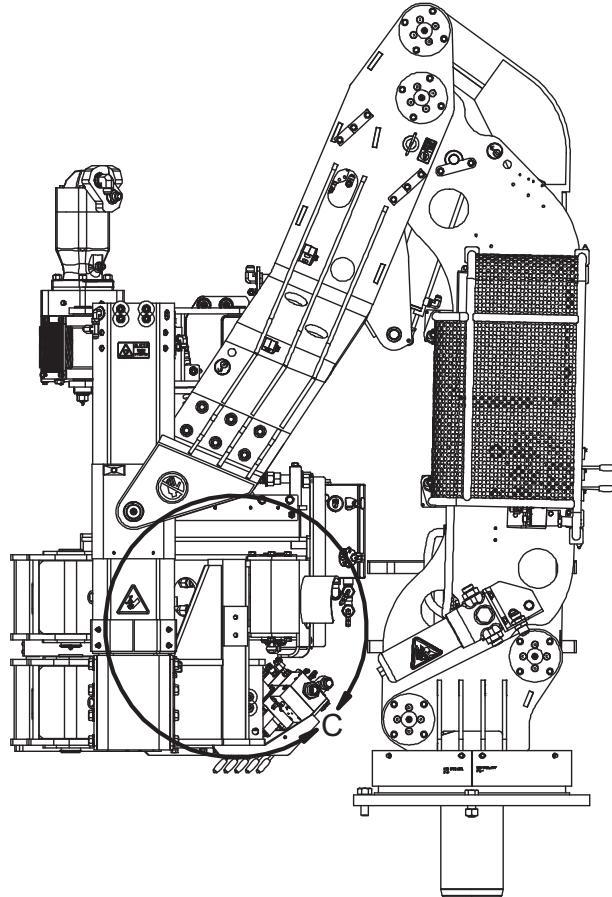


Figure 2: TM120-125 Left Side View

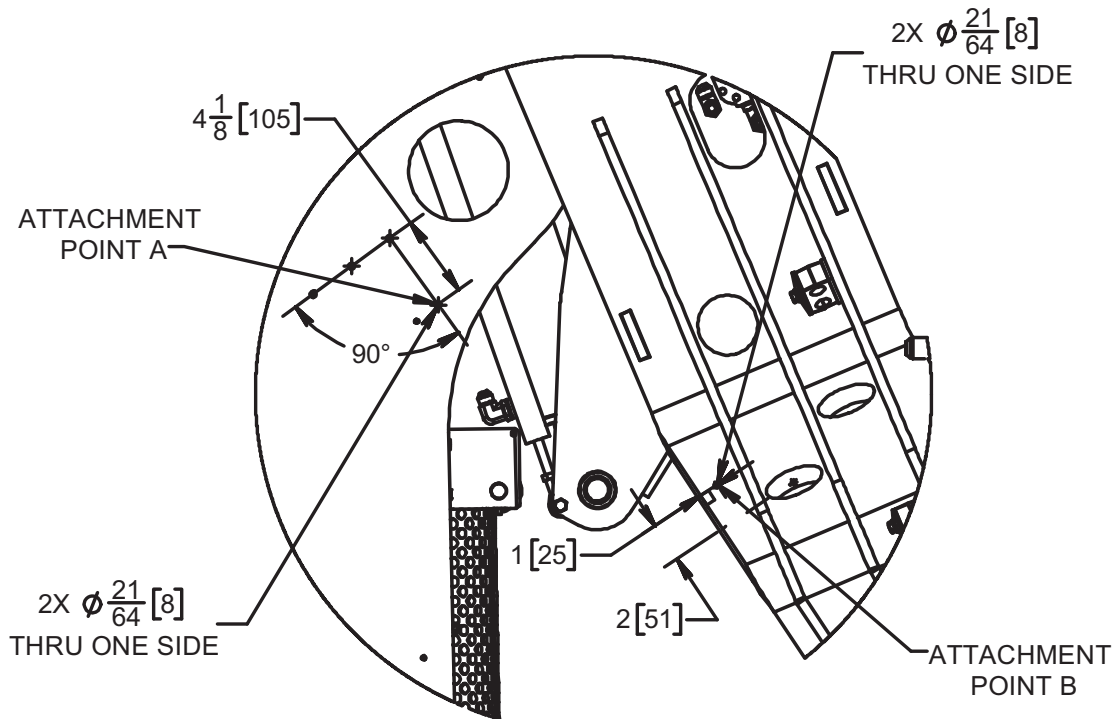


Figure 3: Detail A: TM120-125 Main & Jib Boom Drill Hole Locations

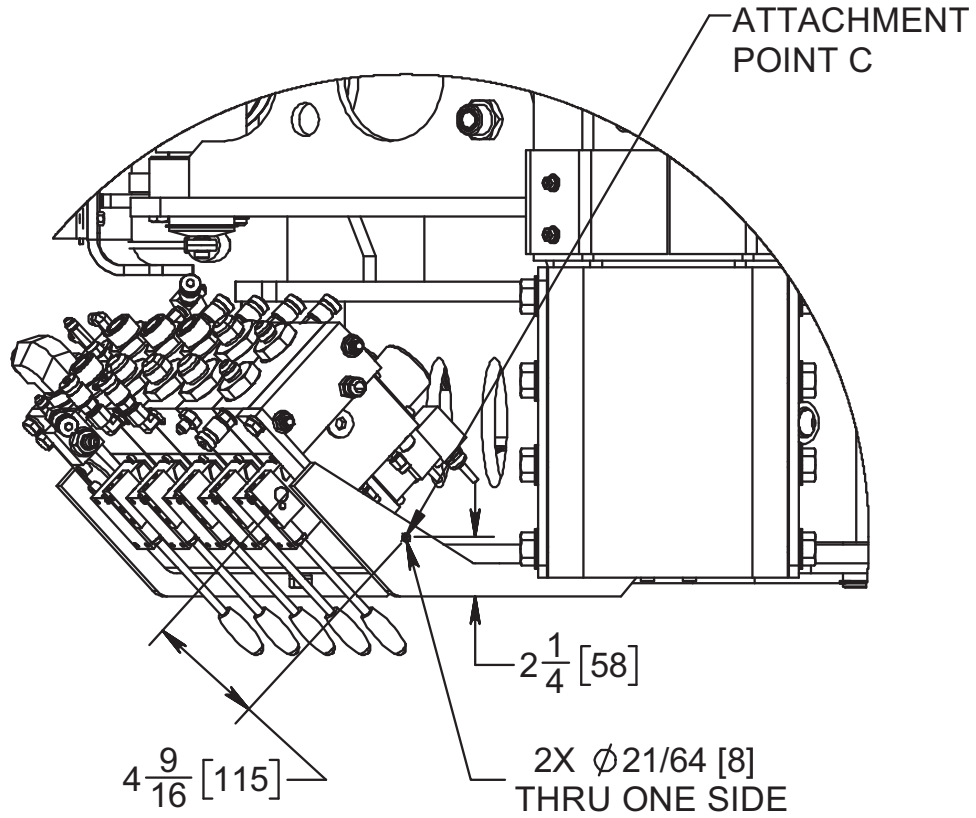


Figure 4: Detail B: TM120-125 Tong Valve Bracket Drill Hole Location

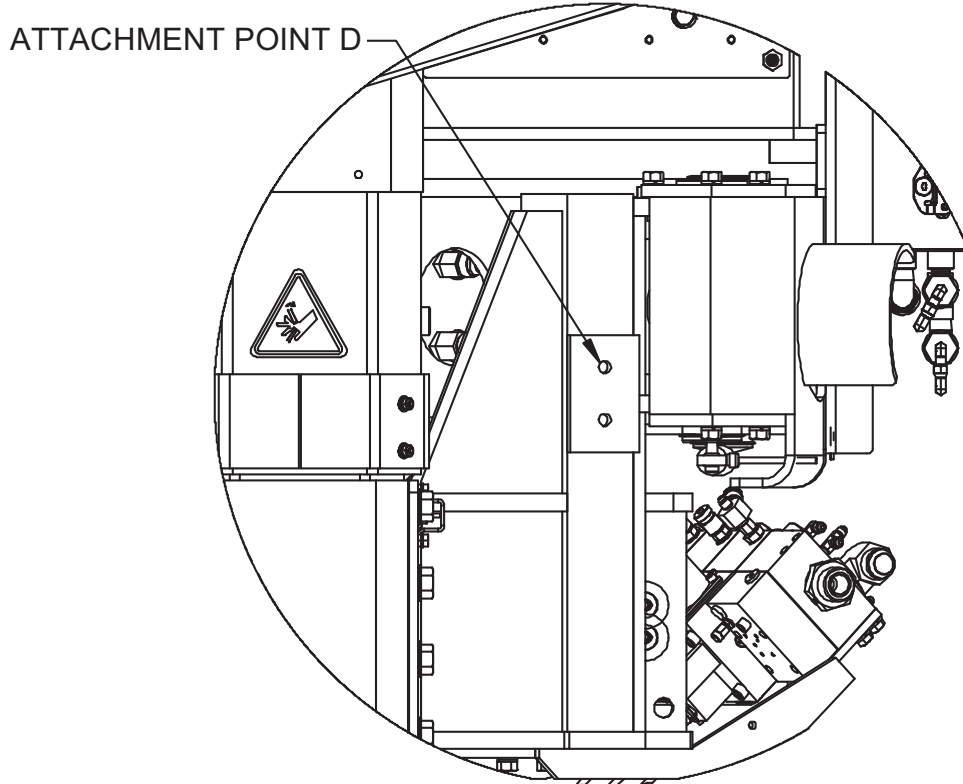


Figure 5: Detail C: TM120 Pre-Existing 5/8-11 UNC-2B Drilled and Tapped Hole

Attaching Barriers to the Wrench

Right Side

1. One end of one short barrier and one long barrier will share Attachment Point "A" on both sides of the wrench. Align the centers of the grommets over "A" and hold in place with a 5/16" fender washer. Run the longer 5/16" cap screw through the washer, barriers and frame and install locknut over shaft of cap screw on opposite side. Do not tighten locknut all the way. Allow some slack so that the barriers can rotate around the cap screw.
2. Attach the other end of the short barrier to Attachment Point "B" using the shorter 5/16" cap screw and fender washer. Fasten in the manner described above except with one barrier strap per attachment point.
3. Attach the other end of the long barrier to Attachment Point "C" as shown on Figure 6 and attach in the manner described above.

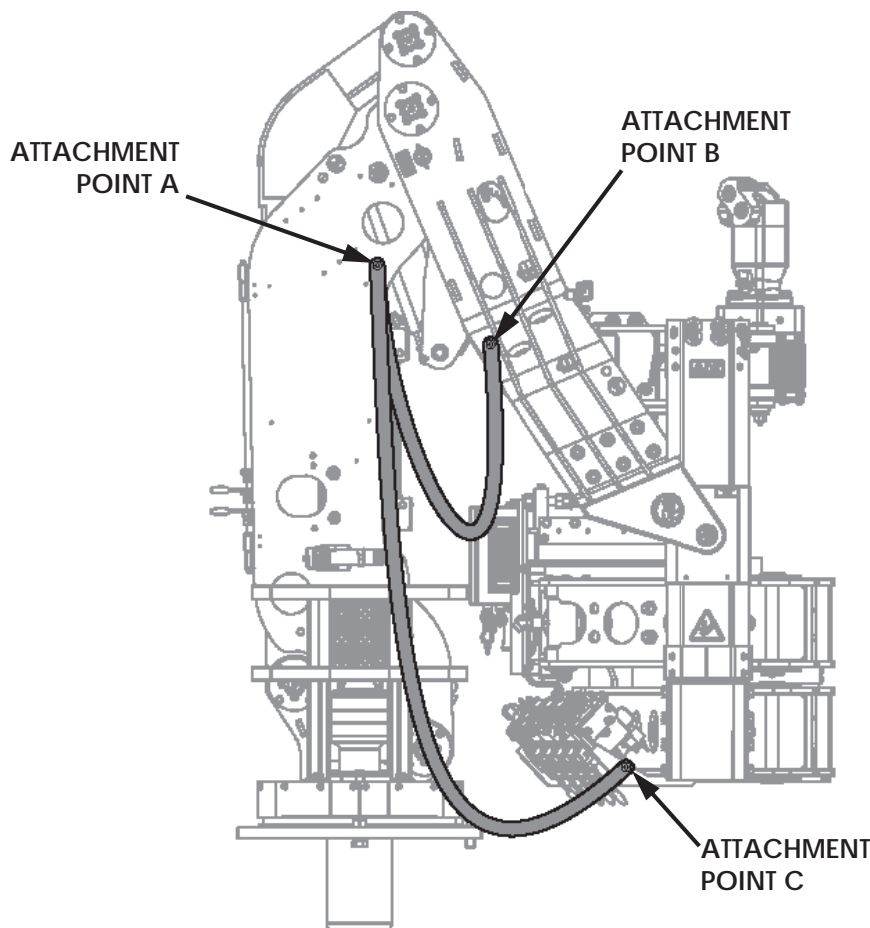


Figure 6: Barriers Attached to Right Side of the Wrench

Left Side

1. One end of one short barrier and one long barrier will share Attachment Point "A" on both sides of the wrench. Align the centers of the grommets over "A" and hold in place with a 5/16" fender washer. Run the longer 5/16" cap screw through the washer, barriers and frame and install locknut over shaft of cap screw on opposite side. Do not tighten locknut all the way. Allow some slack so that the barriers can rotate around the cap screw.
2. Attach the other end of the short barrier to Attachment Point "B" using the shorter 5/16" cap screw and fender washer. Fasten in the manner described above except with one barrier strap per attachment point.
3. Attach the other end of the long barrier to the Attachment Point "D" (see Figure 7) using the 5/8" cap screw and fender washer. Since this is a blind hole, no locknut will be used.

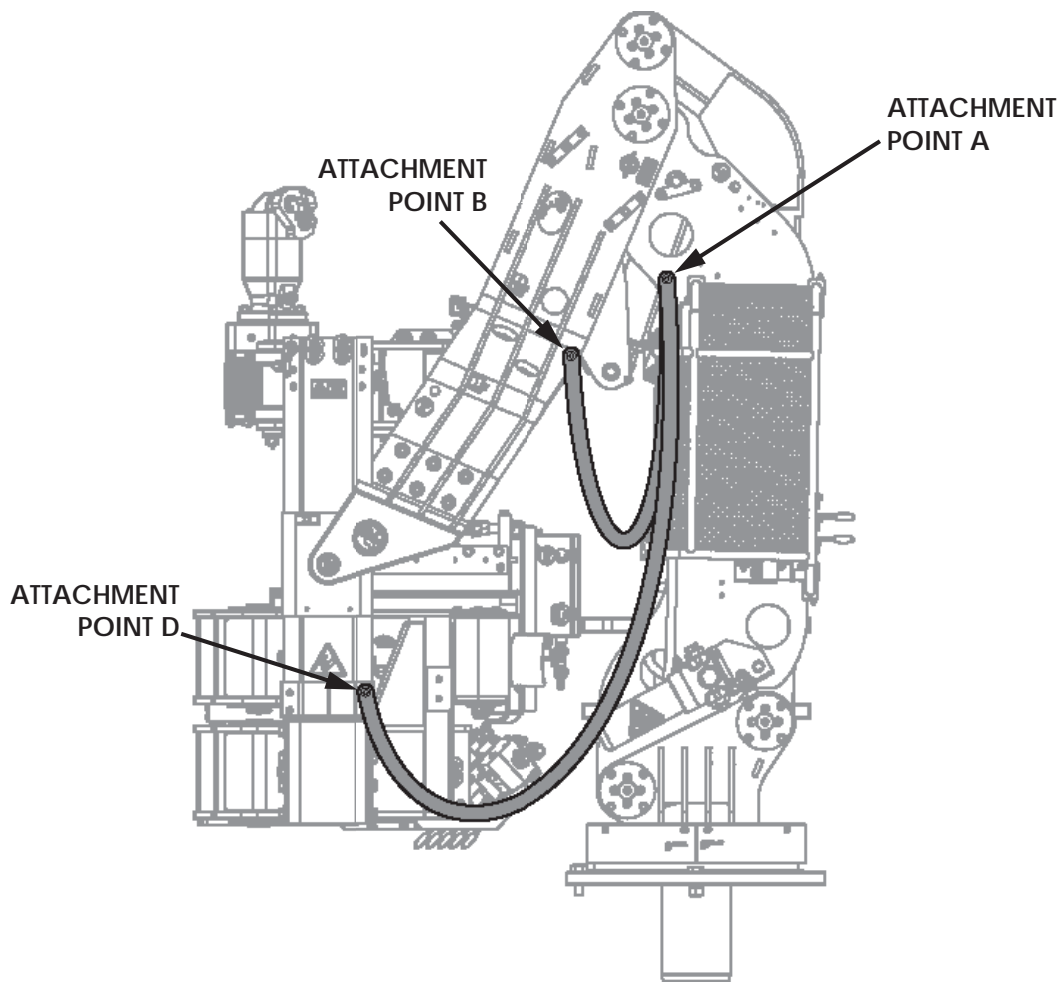


Figure 7: Barriers Attached to Left Side of the Wrench



Model: TM120-125	Oct. 12, 2017
Serial #: All	

Checking the Installation

1. Remove lock out and tag out devices from the machine per local procedures.
2. Power up unit and perform full systems function test.
3. Rotate, extend, retract, raise, and lower the wrench to ensure that the barriers do not become snagged on other parts of the wrench or on the rig floor. Make adjustments as necessary.
4. Continue normal operations.