



CANRIG DRILLING TECHNOLOGY LTD

PRODUCT BULLETIN NUMBER: 15

DATE: July 13, 1993

SUBJECT: Block Guides

SERIAL NUMBERS: 007, 008

DISCUSSION: The possibility of the block guides catching on a Torque Guide seam should be minimized and the block guides should be retained from falling should the bolts break or fall out.

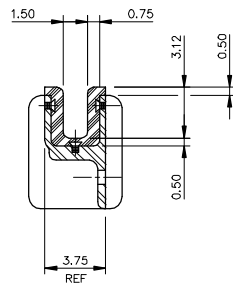
RECOMMENDATION:

1. We recommend that the urethane at the ends of the block guides be beveled according to Drawing C-3-701-10-0 (attached). A grinder or saw can be used for this purpose.
2. We recommend that safety chains be installed on the block guides in a manner similar to Drawing B-3-701-03-1 (attached).

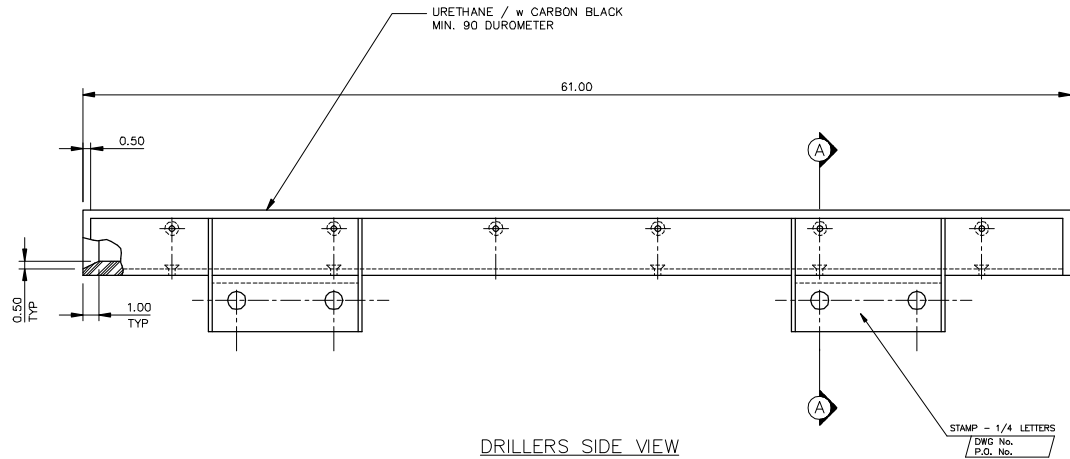
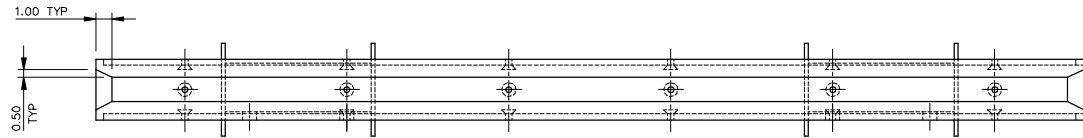
INFORMATION:

For further information contact:

Field Operations Manager
Canrig Drilling Technology Ltd.
14703 FM 1488
Magnolia, Texas 77354
Phone: 281.259.8887
Fax: 281.259.8158



SECTION A-A

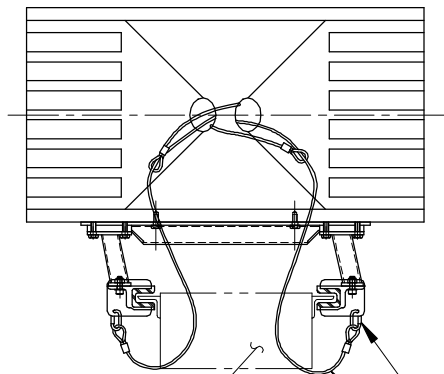


DRILLERS SIDE VIEW

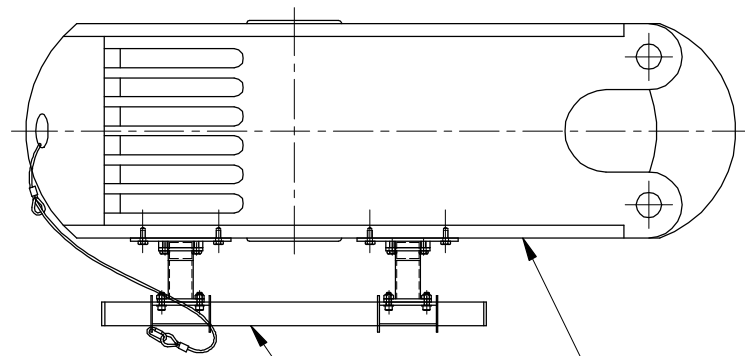
NOTES:

- 1) PRIOR TO COATING ENSURE:
 - ALL WELDING IS COMPLETE
 - SANDBLAST INSIDE OF CHANNELS
 - CAPSCREWS HAVE BEEN INSTALLED

THIS PRINT AND DESIGN AND DETAIL SHOWN THEREON ARE THE PROPERTY AND INVENTION OF CANRIG DRILLING TECHNOLOGY LTD. THIS PRINT IS FURNISHED WITH THE UNDERSTANDING THAT IT IS NOT TO BE REPRODUCED WITHOUT PERMISSION AND RETURNED UPON DEMAND. ALL RIGHTS OF DESIGN AND INVENTION ARE RESERVED BY CANRIG DRILLING TECHNOLOGY LTD.				TOLERANCE - UNLESS OTHERWISE SPECIFIED			DRAWN	MPM	92/10/20	CANRIG CANRIG DRILLING TECHNOLOGY LTD.	
REMOVE SHARP CORNERS AND BURRS				CASTING ± 1/16		FABRICATING [METRIC]	MACHINING IMPERIAL		CHECKED		
① CONCENTRICITY ± .005 TIR				0 TO 600 mm ± 1 mm		DECIMAL .x ± .030"		APPROVED	97/09/04		
- STRAIGHTNESS ± .008 IN 5 INCHES				> 600 mm ± 3 mm		.xx ± .015"		701-10-1			
J. SQUARENESS ± .010 IN 5 INCHES				FABRICATING IMPERIAL		.xxx ± .005"		EST. WEIGHT			
K. PARALLELISM ± .010 IN 5 INCHES				0 TO 24" ± .06"		ANGULAR ± 1'		SCALE			
L. TRUE POSITION .005				> 24" ± .12"		ANGULAR ± 1'		PROJECT			
M. MACHINED SURFACES 125				ANGULAR ± 2'		ANGULAR ± 1'		680			
No.	Y/M/D	BY	REVISION							701-10-0	REV A



TORQUE GUIDE



QUICK LINK

CABLE c/w THIMBLES

BLOCK GUIDE

TRAVELLING BLOCK

THIS PRINT AND DESIGN AND DETAIL SHOWN THEREON ARE THE PROPERTY AND INVENTION OF CANRIG DRILLING TECHNOLOGY LTD.. THIS PRINT IS FURNISHED WITH THE UNDERSTANDING THAT IT IS NOT TO BE REPRODUCED WITHOUT PERMISSION AND RETURNED UPON DEMAND. ALL RIGHTS OF DESIGN AND INVENTION ARE RESERVED BY CANRIG DRILLING TECHNOLOGY LTD..

					TOLERANCE - UNLESS OTHERWISE SPECIFIED			DRAWN	D.P.	93/08/04	CANRIG DRILLING TECHNOLOGY LTD.	
					REMOVE SHARP CORNERS AND BURRS			CHECKED				
					CASTING ± 1/16			APPR'VD				
					MACHINED SURFACES 125/			MATERIAL	BY	Y/M/D		
No.	Y/M/D	BY	REVISION	REFERENCE DWGS	FABRICATING		MACHINING		EST. WEIGHT	SCALE	PROJECT	B-3-701-03-1 REV
					FRACTIONAL 0 TO 24 ± 1/16 > 24 ± 1/8 DECIMAL 0 TO 24 ± .06 > 24 ± .12 ANGULAR ± 2'		FRACTIONAL ± 1/32 DECIMAL .x ± .030 .xx ± .015 .xxx ± .005 ANGULAR ± 1'			1:20		

This page intentionally left blank