



CANRIG DRILLING TECHNOLOGY LTD

PRODUCT BULLETIN NUMBER: 52

DATE: July 12, 1999

SUBJECT: PORTABLE TORQUE GUIDES

SERIAL NUMBERS: 13, 14, 16, 19-24, 26-33, 36, 38, 40-46, 51-54, 56-65, 67-79, 81-95, 97-102, 104-116, 121, 125, 128, 132, 134, 140

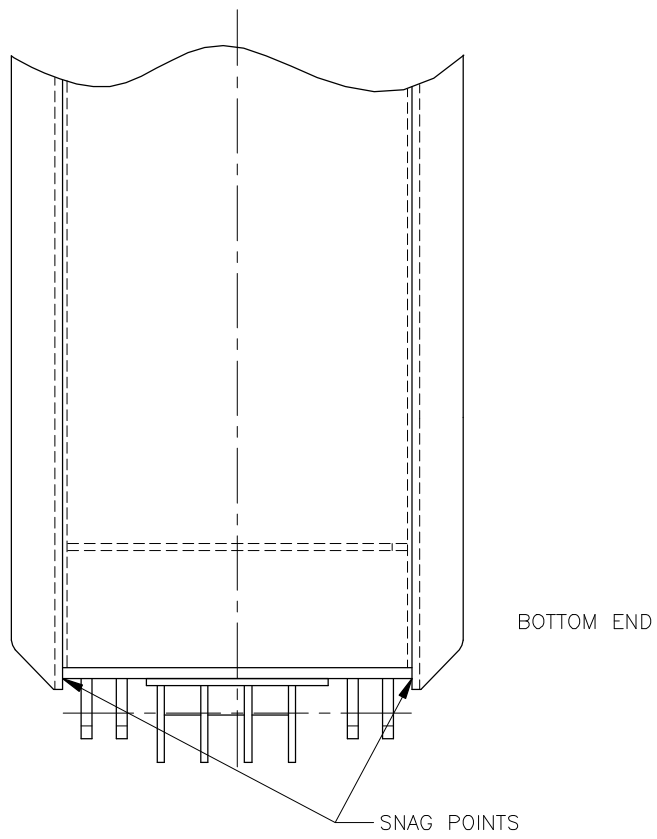
DISCUSSION: When running casing, angles on the Torque Guide Section 2 can be a snag hazard if using a pick-up/lay down machine to push the casing.

RECOMMENDATION: The angles can be trimmed back approximately 1/2 inch to be flush or recessed with the bottom of the Torque Guide tube. See attached drawing. The angle should be beveled and ground smooth. This will help prevent premature wear of the Top Drive guide rails.

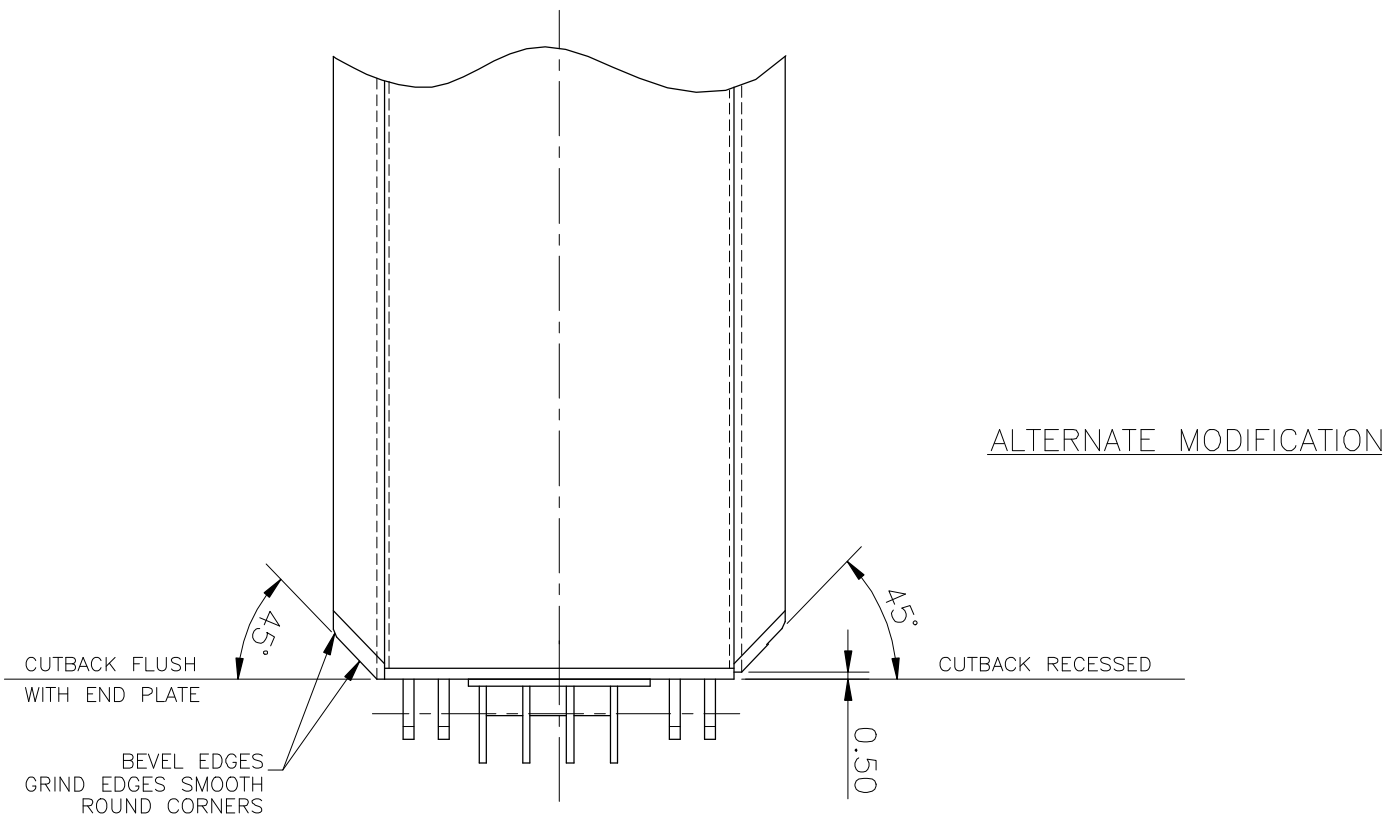
INFORMATION :

For further information contact:

Field Operations Manager
Canrig Drilling Technology Ltd.
14703 FM 1488
Magnolia, Texas 77354
Phone: 281.259.8887
Fax: 281.259.8158



EXISTING SECTION 2



MODIFIED SECTION 2